

Fourlanesend Community Primary School

CAWSAND
TORPOINT
CORNWALL
PL10 1LR

Tel: 01752 822502

Email: head@fourlanesend.cornwall.sch.uk
Website: www.fourlanesendprimary.co.uk

27th January 2023



Message from Head teacher: Teachers at Fourlanesend are not striking and therefore school is open on Wednesday. Thanks to everyone who has donated filled jars for the school fill a jar fundraiser. We have made £190.20 in a week and all the children have received something. It has been lots of fun and the money raised is to go towards a second new picnic bench for the playground.

Dates For Your Diary

Weds 8th Feb - Class Plym theatre trip.

Mon 13th - Fri 17th Feb - Half term.

Thurs 2nd Mar - World Book Day.

Weds 15th Mar - Year 5 Junior Lifeskills at Liskeard Fire Station.

Fri 17th Mar - Comic Relief Red Nose Day.

Weds 22nd Mar - Parents afternoon/evening.

Tues 28th Mar - Football match v Harrowbarrow (away).

Fri 31st Mar - Last day of term, 2pm finish.

Mon 17th Apr - Back to school.

Mon 1st May - May Day Bank Holiday

Mon 8th May - Bank Holiday following the King's coronation.

Tues 9th - Fri 12th May - SATs week.

Mon 29th May - Friday 2nd Jun - Half term.

Fri 21st Jul - Last day of school.

Want to support the local woodland?

We're planting twenty-five trees in Pigshill & Clarrick Woods and are looking for local families to help us! (tools, hot drinks and refreshments provided)
Join us in the woods anytime between 9am-3pm on the following open days:
Saturday 28th & Sunday 29th January,
Saturday 4th February.
Contact - kitchen@familyforagingkitchen.co.uk for more information.

BREAKFAST & AFTER SCHOOL CLUB AT FOURLANESEND

7.45am-8.45am
3:15pm-5:30pm

For more information and to book a place for your child, please contact the office.

Places **MUST** be booked at least 24hrs in advance.

Football Club

Congratulations to this week's players of the week:

KS1 - Finlee

KS2 - Morgan

Football Kits

For the children who attend our football club, particularly KS2 children, if you return your kit to the office, it can be exchanged for the next size up, if needed. The smaller sizes can then be given to our KS1 children.

Landrake Inter School Cross-Country Run - Friday 10th March

The annual cross-country run for KS2 children takes place at Sir Robert Geffery's School, Landrake. Between five and six hundred children from about thirty schools usually take part. The course, some three 'Cornish' miles, is billed as the hardest, dirtiest, wettest but the most interesting in Cornwall. It starts and finishes at the School and takes in lanes, fields, woods, hills and a salt marsh. If you complete the course and are still dry, you've gone the wrong way! You are advised to bring something suitable for the journey home to sit on. Parents are welcome to run, at no charge, with their children. If you wish to participate, we need to register numbers in advance so please let the office know by 24th February.

Trading Cards

Polite reminder, no trading cards in school please e.g. Pokémon, football cards etc.

Class News

Class Lynher - In RE we were looking at what is important at Christmas to Christians compared to non Christians. In geography we looked at the eight compass points and we have started our poetry unit in English. In PE, we have been practising our under and over arm in badminton as well as disco dancing with Daisy. By Sage & Phoebe.D

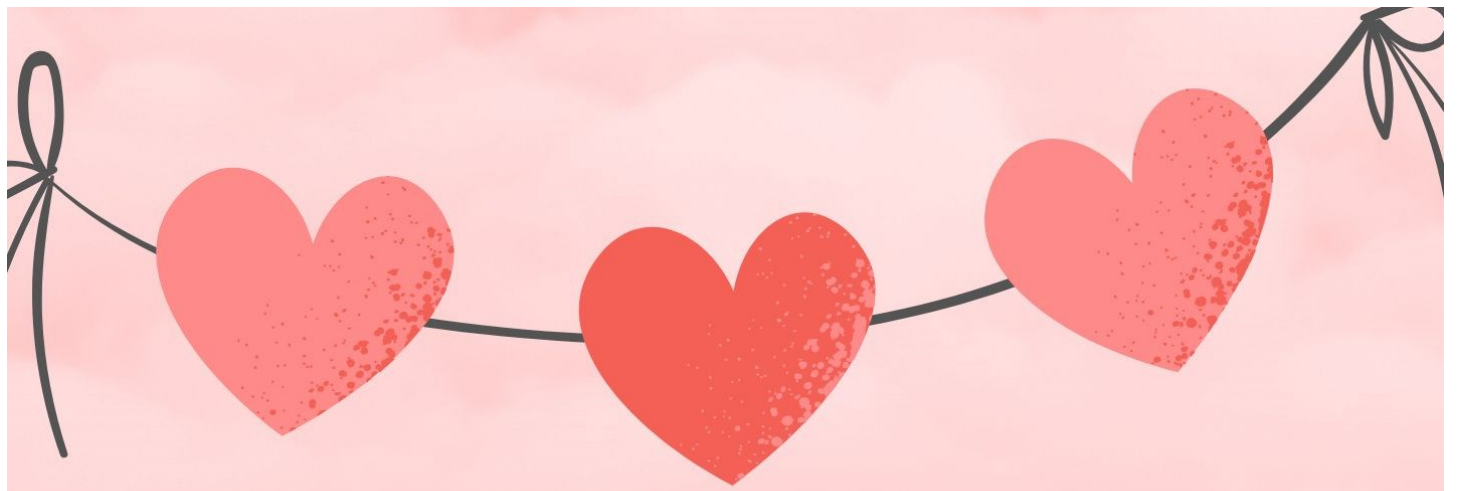
Class Tamar - In French this week, we have been learning how to say I like, I love, I hate and I don't like different types of food. In RE we have designed and decorated our own prayer mats and in PSHE, we have been talking about how we can create new dreams if perhaps our original dreams don't work out. In science, we have been measuring each other to find out if we are a square or a rectangle and then plotted the results on a bar chart. By Maya & Will

Class Cremyll - We enjoyed reading the letters from our pen pals and also did rock n roll dancing in PE. We did a show and tell of our favourite toys and wrote profiles about them. We had a few visitors to the classroom to talk about their childhood toys and we typed questions on the laptops to ask them. By Alfie, Hugo & Michael

Class Plym - We've been using scales to do weighing and find out if things are heavy or light. We made play dough with water, flour, food colouring and salt. Some of us went on balance bikes and we had to wear a helmet. We have also written a shopping list for what we would like on our pizza. By Noah H, Noah S, Sam & Lola

Kingfisher's Valentine's Party

10th February, 4-5.30pm, Kingfisher Hall. Age 2-6 years, £2 entry - includes disco, Awenak Studio craft, drink & snack. Available to purchase: chocolate lollies, glow sticks, sweet cones and Valentine's cards crafted by the children.



Kingfisher's
Valentine's
PARTY

10th February
4-5:30pm
Kingfisher Hall

Age 2-6 years
£2 entry - includes
disco, Awenek Studio craft, drink & snack

Available to purchase: chocolate lollies, glow
sticks, sweet cones and Valentine's cards
crafted by the children